

# Paringa Archery Club Newsletter

## Join in, achieve and have fun.



Target and Field: 201 Reatta Rd, Trevallyn Reserve, Launceston, Tasmania

### August 2018

To help make the newsletter relevant for you, please pass on any copy, comments, suggestions or submissions to the email in the footer or catch me at the club. Jeff Garner.

### Face of Paringa



Long-time member, Wayne Boon (Boony) started with compound but in the last couple of years, has graduated to the demands of the

longbow. His interest in drones has seen some great aerial footage of the Paringa grounds and Clout range, at Longford, posted to the Paringa [Facebook](#) page.

### Indoor Range OPENING



Open for fun and good times!

**Saturday 13<sup>th</sup> October 2018** has been set as the date for the formal opening of the Indoor Range. A small group has been brought together to help organise for the event. ie: Invitations, catering Running sheet etc.

- Lions Club will be bringing a food van and coffee van.
- WayFM 105.3 will be broadcasting their breakfast show from the range.
- 

Please let Jeff Garner know if you would be interested in helping.



Raffle to be drawn at the Opening

### Club Meetings

#### Club Meeting

Sat 1 Sep 2018, 12:15pm - 1:00pm

Calendar: [Clubs > Paringa Archers > - Club Calendar](#)

Next club meeting: See [calendar](#)

Organiser: President

### Working Bees

"We make a living by what we get but we make a life by what we give." Winston Churchill



Paul Mal did a top job refreshing the medal display in the club house.

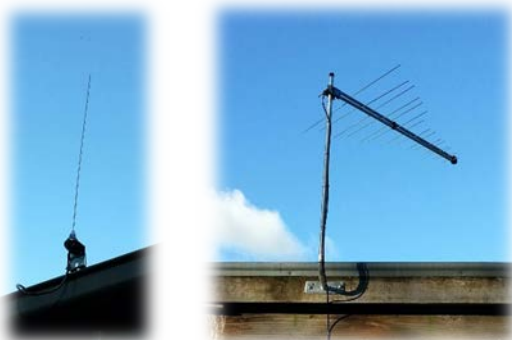
# Paringa Archery Club Newsletter

## Join in, achieve and have fun.



Target and Field: 201 Reatta Rd, Trevallyn Reserve, Launceston, Tasmania

---



Wal Morphett has been busy installing an aerial for the Indoor range radio and club house TV.



Michael Roberts, Brian Swinton and Jeff Garner lined some more of the back wall.

### Sunday 12<sup>th</sup> August Working Bee

A great turnout with a few apologies due to other commitments. Dean and Roger Emery, Brian Swinton, Paul Malinowski, Tim Smallbon, Jeff Garner, Geoff Dyer, John Dodos, Michael Hinds, Barrie Peers, Andrew Fluck and Matt Everett made up a dedicated core of volunteers for the day.

The result was six refurbished target butts and one repaired stramit butt. That's about \$4,200 saved o buying new butts that the club can't afford at this time. Two windsock poles and three wooden boxes for seating or bow cases. A job well done.



Getting the damaged butts off the range.



The hub of operations.



Cutting up the old butts to make new cores.



Building some boxes for seats, bag shelves etc

# Paringa Archery Club Newsletter

## Join in, achieve and have fun.



**Target and Field:** 201 Reatta Rd, Trevallyn Reserve, Launceston, Tasmania

---



Wind sock pole eastern side.



Wind sock pole western side.



Jeff "supervising!" (from Geoff Dyer)

**Next Working Bee:** See [calendar](#)  
**Organiser:** All members

### Groups

There were 2 groups for this month, for a total of 22 participants.

Do you know of a group that would love to have a go at archery (schools, corporate, birthdays etc)?

**Organiser:** Jeff Garner - m: 0411 878 658

### Come N Try (Sat and Wed)



Brian took quick action, to save a water-logged range, by moving the 4<sup>th</sup> Aug Come N Try indoors.



Wed Aug 22<sup>nd</sup> Come N Try

### Come N Try Teams

#### Team 1

Wally Morphett  
Shirley Morphett  
Richard Barnes  
Tim Smallbon

#### Team 3

Brian Swinton  
James Barker  
Dean Emery

#### Team 2

Andrew Fluck  
John Dodos  
Emma Hutchison

#### Team 4

Rolfe de la Motte  
Geoff Dyer  
Nick Heywood

### Backups:

Jeff Garner, Caitlin Street, Karen Neil

# Paringa Archery Club Newsletter

## Join in, achieve and have fun.



**Target and Field:** 201 Reatta Rd, Trevallyn Reserve, Launceston, Tasmania

Thanks to these members for offering their time. A few volunteers still needed (we'd like to have 4 in each group). If you can spare one morning every four weeks please contact Rolfe on 0409 686 911 or [rolfe.delamotte@gmail.com](mailto:rolfe.delamotte@gmail.com)

**Organiser:** Rolfe de la Motte and Teams

### Wish List

Some items that may be appropriate for **future consideration** by the committee,

Description	Est \$k
Line marker for range lines <a href="http://www.trulineaustralia.com.au/item-details.asp?CategoryID=40&amp;ItemID=83">http://www.trulineaustralia.com.au/item-details.asp?CategoryID=40&amp;ItemID=83</a>	1.2
Indoor – Carpet tile floor (480 sq m)	11
Tarmac - car park	20
Tarmac – Entry road	20
Permanent Clout range	
Workshop (in container)	2
High speed cameras (x3) for Coaching	6
Safety fence for west side of range	
<a href="#">Ride on 4wd mower</a> with trailer	15
<a href="#">Wheeled leaf vacuum</a> (range/indoor)	1.2
Weather Station (Digital) for tournaments ...	.4
Small tools - maintenance	2

### Members

There were 0 new members since 1/8/2018.

Please welcome our newer members when you see them around the club.

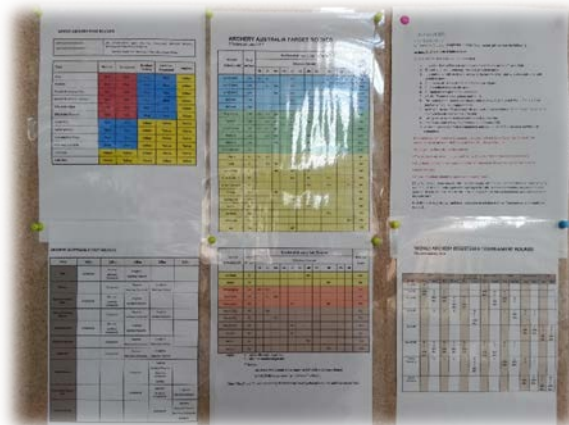
### Member Club Coaching

Often archers get confused about what round they should be shooting at an event. Most events are done by age division and equipment classification but you are not restricted to shooting these rounds.

The **club shoot** may be advertised as a WA 60/900 (30 arrows @ 60m, 30 arrows @ 50m, 30 arrows @ 40m) but you could shoot a shorter similar (same arrow combination but shorter distances) round like a Short Canberra (50/900) (30 arrows @ 50m, 30 arrows @ 40m, 30 arrows @ 30m) or Junior Canberra (40/900) (30 arrows @ 40m, 30 arrows @ 30m, 30 arrows @ 20m). There is also no pressure to finish shooting all the round as you can withdraw at any stage.

Shooting in organised events is not about seeing who the best archer is, it's all about working on your own archery, enjoying the comradery and especially the mindfulness of the sport.

No matter how good Paringa archers are, there is always someone better, so don't feel intimidated to have a go, we all start as a beginner.



All the possible archery rounds are on the wall in the Indoor range.

Email [coaching@paringa.archerytasmania.org.au](mailto:coaching@paringa.archerytasmania.org.au) to arrange a free member coaching session.

**Organiser:** Club Coach

## OLYMPIC BRONZE MEDALIST ALEC POTTS COACHING SEMINAR

SEPTEMBER 29TH/30TH at Hobart Archers

\$75 per person for Saturday  
\$100 per person for Saturday/Sunday  
(pay on the day)

### SATURDAY:

The seminar will begin at 10am, Alec will talk about his own archery journey and experiences with a Q&A session followed by Alec offering coaching during short distance shooting. Estimated finish at 2pm

### SUNDAY:

Starting at 10am participants will shoot a round of 72 arrows, plot and score at their chosen distance. We will then look over the data and Alec will provide coaching during and after this session.

Hobart Archers will be running a BBQ lunch on both days.

**Editor:** Jeff Garner

**Comments/Submissions:** [treasurer@paringa.archerytasmania.org.au](mailto:treasurer@paringa.archerytasmania.org.au)

**Club Website:** [www.paringa.archerytasmania.org.au](http://www.paringa.archerytasmania.org.au)

**Event Results:** [archersdiary.com](http://archersdiary.com)

# Paringa Archery Club Newsletter

## Join in, achieve and have fun.



**Target and Field:** 201 Reatta Rd, Trevallyn Reserve, Launceston, Tasmania

This is a great opportunity to benefit from the skills and experience of one of Australia's finest archers.

No need to book - but if you are planning on attending it would be helpful for catering purposes if you can RSVP to [contact@hobartarchers.org](mailto:contact@hobartarchers.org)

[PARINGA ARCHERS / ARCHERY SOCIETY TAS \(AST\) EVENTS CALENDAR link](#)



Wear an arm guard or wear the result. Ouch!

### Club Target



60/900 on Sat 4<sup>th</sup> Aug was well attended.

### Club Indoors

Saturday 11<sup>th</sup> Aug saw the indoors shared between the Come N Try and small (2 archers) Beginners course. Good to see we are still getting attendance in the colder/wetter months.

All results at [archersdiary.com/EventResults.aspx](http://archersdiary.com/EventResults.aspx)

### Club Clout

### Rabbit of the Month

For things members occasionally do but probably wish they hadn't.



Better to "pull" the arrow out rather than "twist" it and end up with a two-part arrow!



Sam showing Matt how you shoot in the rain  
I guess recurvers are just born tough!



# **Paringa Archery Club Newsletter**

## **Join in, achieve and have fun.**



**Target and Field:** 201 Reatta Rd, Trevallyn Reserve, Launceston, Tasmania

---

### ***The Final Say***

Email from a past Treasurer, Dev Ranmuthugala.

*I am now a member at Waverly City Archers.*

*The Come & Try is not as easy as the one at Paringa. Only a limited number, so have to book beforehand. Too cumbersome. Therefore, it was better to join.*

*To join, I had to pass a test, as I didn't do the 4-week beginners course.*

*The club is not located in a great place like Paringa. It is close to a soccer field. The club house is just a room with an armoury. But they do have some good gear that the members can use. Including stuff for compound archers. There are a lot of traditional archers, some with rather exotic bows. See link for the club info:*

*<http://www.waverleycityarchers.org.au/index.html>*

*The club gives all members club cards (in addition to the AA card), which are colour coded for years and with a large month stamp. They are laminated, has a punched hole and includes a zip tie. Members are required to have them clearly visible, for example on their quivers, etc. So they are easily noted if paid up etc. while on the range. A good idea. Maybe something worth looking into there.*

*Keys (for targets that are locked on the ground) are given only on application after being there for 3 months. The targets are on permanent wheels and can be moved by one person.*

*I will certainly do some shooting at Paringa when I visit AMC on work.*

*Regards  
Dev.*

# Paringa Archery Club Newsletter

## Join in, achieve and have fun.



Target and Field: 201 Reatta Rd, Trevallyn Reserve, Launceston, Tasmania

And see

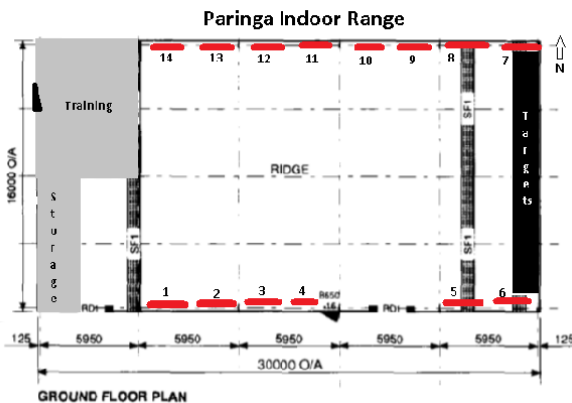
<http://paringa.archerytasmania.org.au/advertising.php> for available advertising spaces.

### Paringa Archers Committee

President	Rolfe de la Motte
Treasurer	Jeff Garner
Secretary	Caitlin Street
Vice President	Tim Schwabe
Recorder	Geoff Dyer
AA Club Coach - Compound	Jeff Garner
AA Club Coach - Recurve	Jeff Garner
Public Relations	Jeff Garner
Schools Prog Coordinator	Jeff Garner
Group Bookings Coordinator	Jeff Garner
Tournament Coordinator	Andrew Fluck
QRE Official	Geoff Dyer
AST Delegate	Jeff Garner
Public Officer	Caitlin Street
Member Protection Officer	Caitlin Street
Web Administrator	Jeff Garner
Auditor	Cameron

### Advertise - Paringa Indoor Range

Do you know anyone that may like to advertise in the Indoor Range?



Each **signage space** (1.2m(h) x 2.4m (w) max) is priced at \$500 per year. Advertiser supply the sign and have the option for one or multiple years of advertising.

For more information please contact the Treasurer [treasurer@paringa.archerytasmania.org.au](mailto:treasurer@paringa.archerytasmania.org.au)

## Clint Freeman

### Strings

Clint Freeman strings are made from the highest quality products from BCY fibers. With over 20 years of string making experience, Clint Freeman strings have accumulated in excess of 50 National titles, 2 World titles, multiple international podium finishes, 13 World records plus countless National and State records.

To help reduce any annoying peep rotation or stretch, Clint Freeman strings are constructed under incredibly high tension.

STRINGS and CABLES

RECURVE - \$40 (made from "S125")

COMPOUND - \$40 (made from "X" and "S190")

Mathews solo-cam compound string - \$80

COMPOUND STRING/CABLE SET (3 total)  
(please allow one week)

\$115

STRING CABLE FITTING

(This includes cam timing, draw length set and centre serving to suit nocks)

\$80

Colours currently available in "S125": Black

Colours currently available in "X": Black, Flo Yellow and Flo Green

Colours currently available in "S190": Black, Blue and Buck Skin

Please contact Clint Freeman by

email: [freemanclint@hotmail.com](mailto:freemanclint@hotmail.com) or mobile: 0467299051 to discuss your string needs.

Paringa Archers **recommends you do not** buy equipment off eBay, similar sites or Sports Stores, as **bows need to be matched to the archer and arrows need to be matched to the bow.**



# Paringa Archery Club Newsletter

## Join in, achieve and have fun.



Target and Field: 201 Reatta Rd, Trevallyn Reserve, Launceston, Tasmania

TASMANIAN  
ARCHERY  
SUPPLIES

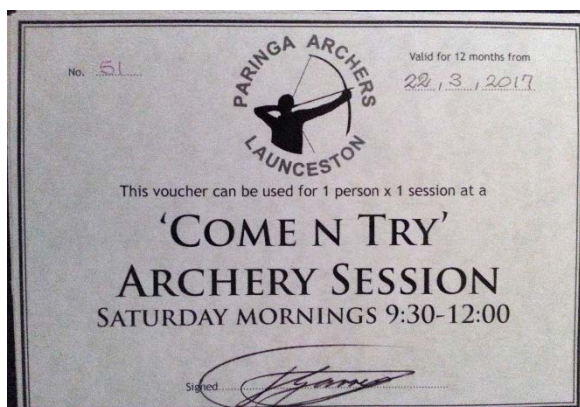
Mt Nelson Tas [Website link](#)

105.3wayfm  
Launceston's  
& 98.1  
www.wayfm.org.au  
hope, inspiration and encouragement for you and your family

Looking for that special gift?  
Look no further!

Yes, the **Paringa Gift Card** says it all.

See Shirley at the club of a Saturday morning and secure one (bargain price of \$15) or more for that special someone.



## Partner Daycare

Want to go fishing, shopping etc or just get some peace and quiet!

*Drop your partner off with Paringa Archers on Wednesday nights or Saturday mornings,*